



PropertyLine



20 St Martins Street Flat 5

Millfield, Peterborough, PE1 3FD

£800 PCM



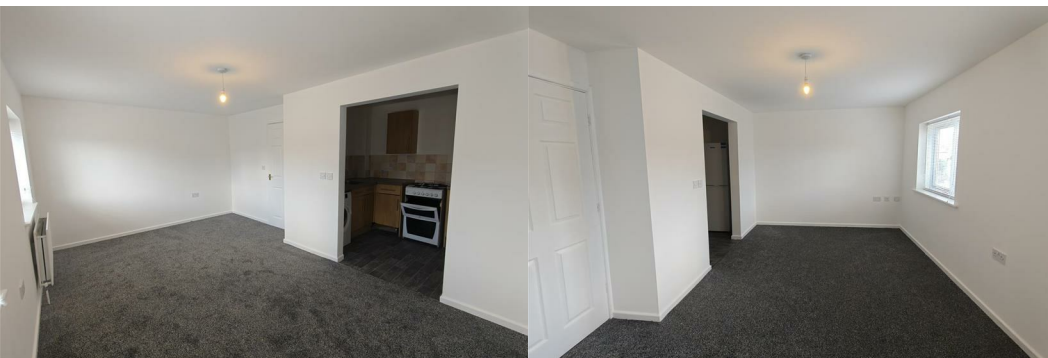
Modern two bedroom apartment situated within walking distance from the City Centre, schools, Peterborough College and local amenities.

Accommodation briefly comprises of entrance lobby, large lounge, fitted kitchen with cooker, one double bedroom, one single bedroom and bathroom with shower.

Benefits include neutral decor throughout, double glazing and gas central heating and private parking.

Viewing highly recommended.

Extra £39 per month towards water bill.



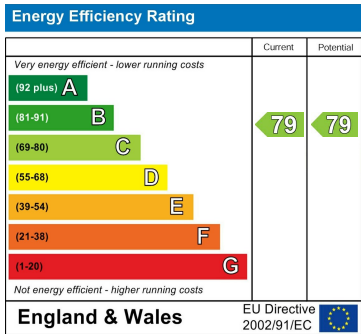
Area Map



Floor Plans



Energy Efficiency Graph



These particulars, whilst believed to be accurate are set out as a general outline only for guidance and do not constitute any part of an offer or contract. Intending purchasers should not rely on them as statements of representation of fact, but must satisfy themselves by inspection or otherwise as to their accuracy. No person in this firms employment has the authority to make or give any representation or warranty in respect of the property.